

Early Childhood Education and Care



CHC30121 CERTIFICATE III IN EARLY CHILDHOOD EDUCATION AND CARE

What it is

This program is designed for students who are passionate about childhood education. Students have the opportunity to support the implementation of an approved learning framework and support children's wellbeing, learning and development.

Students develop skills in a variety of early childhood education and care areas including ensuring the health and safety of children, working within legal and ethical guidelines, using approved learning frameworks to guide practice and developing cultural competence.

Note: Students are required to attend a meeting/interview with the RTO, in 2024, before being officially enrolled into this program.

What you learn

You learn from the following subjects (Units of Competency):

FIRST YEAR

- ✓ Support children to connect with the natural environment CHCECE037*
- ✓ Participate in workplace health and safety HLTWHS001
- ✓ Work effectively in children's education and care CHCECE056*
- ✓ Meet legal and ethical obligations in children's education and care CHCECE055
- ✓ Provide experiences to support children's play and learning CHCECE036*
- ✓ Observe children to inform practice CHCECE038*
- ✓ Identify and respond to children and young people at risk CHCPRT001

SECOND YEAR

- ✓ Encourage understanding of Aboriginal and/or Torres Strait Islander people's cultures CHCECE054*
- ✓ Support the holistic learning and development of children CHCECE035*
- ✓ Develop positive and respectful relationships with children CHCECE033
- ✓ Provide experiences to support children's play and learning CHCECE036*

Note for 1st and 2nd Year: For the satisfactory completion of assessments students must undertake Structured Workplace Learning (SWL) in a regulated early childhood education and care service. This will involve 70 hours of practical placement.

**Units that are assessed as part of SWL Hours*

Who you learn from

YOUR INDUSTRY EXPERT

Central Highlands Group Training
Incorporated RTO Code 3683

WHERE YOU LEARN

BGT Jobs & Training (Ballarat),
Barkly Square, 25-39 Barkly Street,
Ballarat East, VIC, 3350

WHEN

1st Year

Thursday 1.45 pm to 5.00 pm

Class size: 16 to 25 students

2nd Year

Tuesday 1.45 pm to 5.00 pm



"In the program so far, I have enjoyed everything"

RESPONSE FROM 2024
1ST YEAR VET CLUSTER
STUDENT SURVEY

What you get

Upon successful completion of the program, students are eligible to obtain:

School recognition

Credit/Unit eligibility towards your relevant Senior Secondary Certificate. Check with your school for more details.

Workplace recognition

Statement of Attainment (Partial Completion)

(List of the Units of Competency which have been successfully completed)

Your possible career/pathway

Early childhood educators work in day care centres, family day care, pre-schools or kindergartens. Students may choose to complete their Certificate III or go onto further education as outlined below:

Learn more

Certificate III in Early childhood education and care CHC30121 (completion)

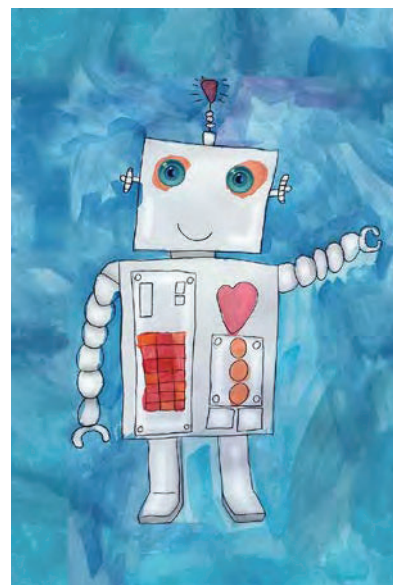
Diploma of Early Childhood Education and Care CHC50121

Bachelor of Early Childhood Education

Bachelor of Education

Employment

Job roles related to this qualification include: early childhood educator, early childhood education team leader, family day care worker, pre-school assistant, out of school hours care educator, centre manager- early childhood educationare services.



Note: Program commencement subject to enrolment numbers. Units of Competency are subject to change. Check with your school VET Coordinator regarding costs and if this program is suitable for you. This training is delivered with Victorian and Commonwealth Government funding to eligible individuals. All details are accurate at the time of publication.

